

# Southampton to London Pipeline Project

## Deadline 6

Site Specific Plan - St James' School  
(tracked change)

Application Document: 8.62

Planning Inspectorate Reference Number: EN070005

Revision No. 2.0

March 2020





**Contents**

<b>1</b>	<b>Introduction.....</b>	<b>1</b>
<b>2</b>	<b>Construction Programme .....</b>	<b>2</b>
<b>3</b>	<b>Description of Works .....</b>	<b>3</b>
3.1	Area Map .....	3
3.2	Access .....	4
3.3	Security.....	4
3.4	Vegetation Removal .....	4
3.5	TC041 Installation Clarendon School to St James School.....	4
3.6	Open Cut installation .....	5
3.7	Reinstatement .....	6
3.8	School Specific Items .....	7
	<b>Appendix A – Area Plan .....</b>	<b>8</b>
	<b>Appendix B – Construction and Reinstatement Plans .....</b>	<b>9</b>



## 1 Introduction

- 1.1.1 This plan provides further detail on the potential impacts, construction techniques and mitigation measures in this area as a standalone document that is certified as part of the Development Consent Order (DCO). Esso is required to comply with and implement the Site Specific Plan under Requirement 17 of the DCO ~~(Document Reference 3.1 (5))~~.
- 1.1.2 The methodology covers the following:
- construction programme;
  - trenchless crossing from Clarendon School to St James School;
  - Open Cut installation;
  - reinstatement; and
  - school specific items;
- 1.1.3 Esso and its supply chain of contractor(s) will adopt the control measures set out in this Site Specific Plan when undertaking the installation of the pipeline.



## 2 Construction Programme

- 2.1.1 Assessment of the intended construction methodology indicates that works within the school will take approximately 18 weeks. This may not be 18 weeks of continuous work, as the works will be staged and planned to occur outside of term time.
- 2.1.2 In addition, the programme will need to take account of any seasonal constraints such as ecological constraints and optimum replanting periods. Notwithstanding the above constraints, the detailed scheduling of the works will look to rationalise and work simultaneously where there is the ability to do so, to reduce disturbance to the park. Once the construction plans have been finalised, the local community will be informed and updated in line with the Community Engagement Plan ~~(Document Reference 8.52)~~.
- 2.1.3 Below is a summary of works and estimated durations, but this is subject to detailed programming and uncertainties such as weather and ground conditions.

**Table 2.1: Estimated duration of works (based on working 6 days per week)**

Works	Estimated Duration
Enabling works and mobilisation	3 weeks
<u>Trenchless crossing</u> TC041	4–6 weeks
Open Cut	8 weeks. Installation will take place during the summer holiday period.
Reinstatement	3–4 weeks

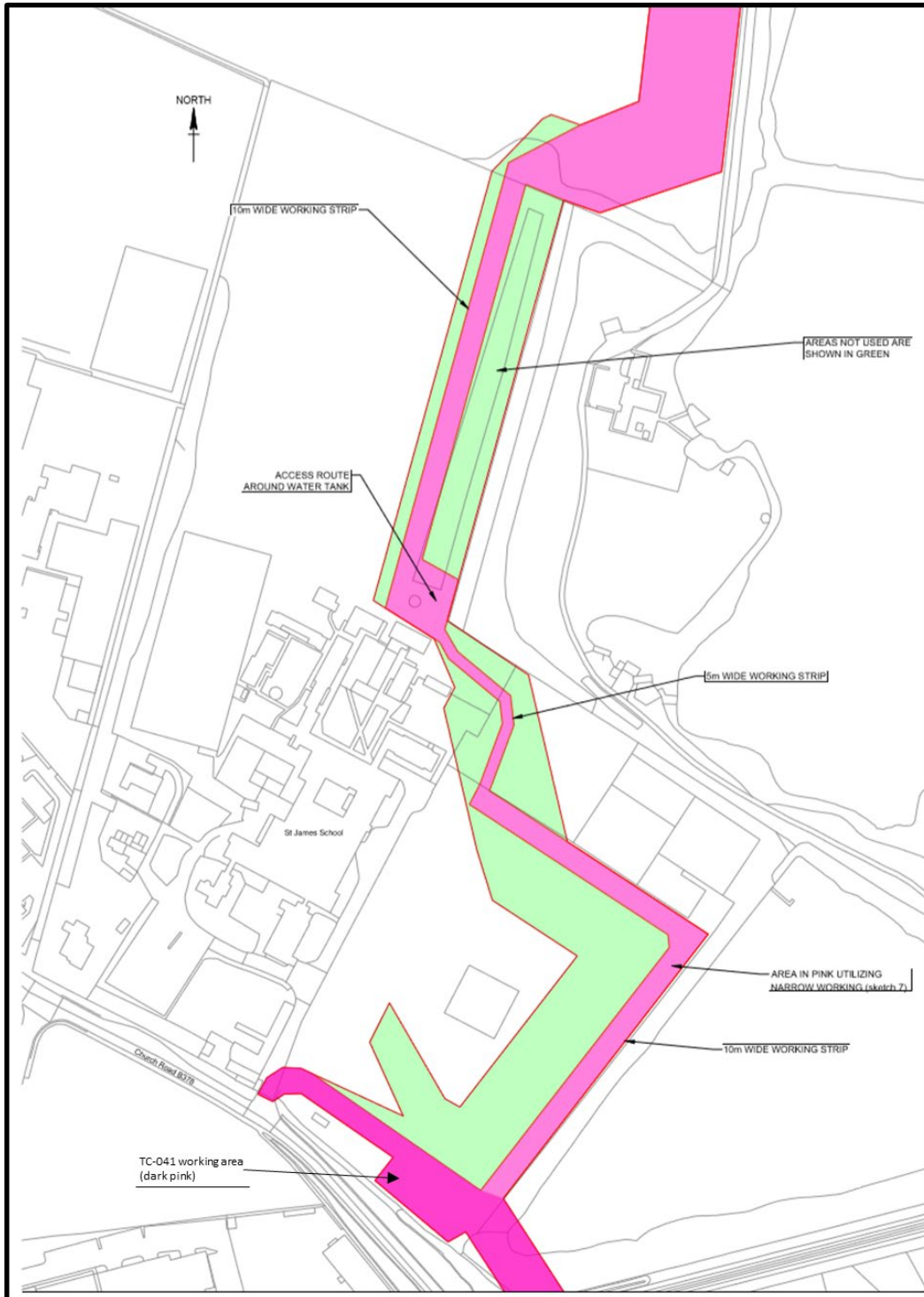
- 2.1.4 Esso intends on constructing the works (Open Cut and trenchless crossing) outside term-time, thereby avoiding a conflict between the operation of the school and the construction of the replacement pipeline. The project will consult with St James School management team/Board of Governors to coordinate the construction timetable to reduce impacts.

2.1.5 All works will be planned to take place within the normal working hours as defined by the DCO. It is only in exceptional or emergency circumstances that the works will continue outside of the standard working hours.

### 3 Description of Works

#### 3.1 Area Map

Illustration 3.1: Plan showing the Order Limits and working strip through St. James School





## 3.2 Access

- 3.2.1 It is intended for works to take place outside of term time. Installation ~~requires~~will require access through the main school gates, access 9AS; however, this will not restrict vehicle access to the school grounds.
- 3.2.2 The Order Limits have been designed to avoid the school's core operating area. As such, there will not be an impact on school buildings or the car park.

## 3.3 Security

- 3.3.1 The construction areas will be fully secure, with locked gates and on-site, 24-hour security and CCTV.
- 3.3.2 Heras-type fencing bolted together, or strong-wall fencing, will be used during the works. All plant and operatives will work within the fencing and compound.
- 3.3.3 The on-site, 24-hour security will patrol all working areas within the park.

## 3.3.4 Vegetation Removal

- ~~3.3.13.4.1~~ 3.3.4.1 In the vicinity of the chapel and the water tower there are several trees protected by Tree Preservation Orders (TPO), with some non-TPO trees just to the south of this location. Here, the working width will be restricted to 5m for a distance of approximately 70m. Further measures such as hand digging will be used where required to reduce impacts to the trees and their roots.
- ~~3.3.23.4.2~~ 3.3.4.2 Apart from the amenity grass found on the sports areas, and the northern hedgerow, little other vegetation is expected to require removal.
- ~~3.3.33.4.3~~ 3.3.4.3 Works for the trenchless crossing (TC041) will be located away from the Tree Protection Zones of the boundary trees.
- ~~3.3.43.4.4~~ 3.3.4.4 Sections 3.45 and 3.56 below outline the approach that will be taken during construction to reduce the impact to vegetation and trees within the school, and this is reflected in the construction stage plan at AnnexAppendix B. As per Requirement 8(1)(a) of the DCO (~~Document Reference 3.1 (5)~~), the retention and removal of vegetation within the park must be undertaken in accordance with this Site Specific Plan (including the construction stage plan) unless otherwise agreed by the relevant planning authority.

- 3.4.5 The project does not intend to remove vegetation over the existing pipelines.

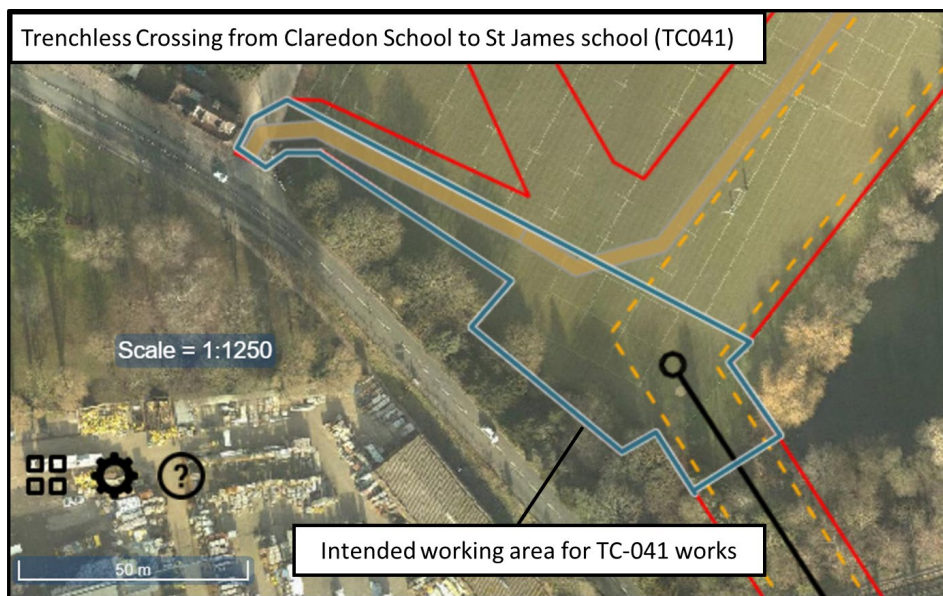
## 3.4.5 TC041 Installation Clarendon School to St James School

- 3.5.1 The works for this trenchless crossing TC041 will follow the methodology as outlined in the Code of Construction Practice (CoCP) and will be tailored to the conditions of the school to reduce the amount of vegetation clearance required. Details on how this will be applied at this location are summarised below.

3.4.13.5.2 The receiving area for TC041 from Clarendon School to St James School will require a receiving shaft in the southeast corner of the southern playing fields, adjacent to the boating lake. The drive pit methodology is covered in the Site Specific Plan for Ashford Road.

3.4.23.5.3 The proposed trenchless work area is indicated in the image below.

**Illustration 3.2: Trenchless crossing from Clarendon School to St. James School (TC041)**



3.4.33.5.4 Installation will follow the standard auger bore methodology, as described in the CoCP. Ground protection will be laid to create the access route from the school's entrance to the working area, in order to reduce impacts on the playing fields.

3.4.43.5.5 The stringing out area in the playing fields is not anticipated to be used if the use of auger bore is agreed with Network Rail.

3.4.53.5.6 If the auger bore takes place before the Open Cut, the working area fencing will be reduced to the minimum area required to safely maintain the excavation pit until the tie-in to the Open Cut section of pipe can be completed. The excavation pit will be covered while not in active use.

### 3.53.6 Open Cut installation

3.6.1 The Open Cut (generic) installation approach described in the CoCP will be tailored to the conditions of the school to reduce the amount of vegetation clearance required. Details on how this will be applied at this location are summarised below.

3.5.13.6.2 Open Cut installation around the sports pitches will be undertaken in line with the schools' methodology and the sports fields methodology, as described in the CoCP, and with a maximum 10m working width, with the exception of the short



section in vicinity of near the chapel and the water tower which will be narrowed to a maximum of 5m.

3-5-23.6.3 Before any construction activities take place, any branch removal, pruning and the hedgerow identified to be removed will be cleared by a specialist with advice from the Environmental Clerk of Works. Vegetation clearance will be undertaken throughout the school grounds before the fencing is erected. Warning signage of restricted zones will be erected to ensure the safety of the pupils, staff and visitors whilst the work is ongoing. All vegetation material will be removed from St James School and recycled. Due to the intention to work outside of term time, this work may take place in the preceding term break (to the Open Cut installation).

3-5-33.6.4 Trees being retained will be protected from installation activity in line with commitment G95: *'The contractor(s) will apply, the relevant protective principles set out in the ~~National Joint Utilities Group Guidelines for the Planning, Installation and Maintenance of Utility Apparatus in Proximity to British Standard BS5837:2012 - Trees (NJUG Volume 4) (2007)~~.in Relation to Design Demolition and Construction. This will be applied to trees within the Order Limits which will be preserved through the construction phase, and to trees adjacent/outside of the Order Limits where such measures do not hinder or prevent the use of the relevant working width for construction.'*

3-5-43.6.5 The project Environmental Clerk of Works and arboriculturalist will provide advice when any works to trees, such as branch removal, are required and pruning, are required. Hand digging and air lance techniques or similar British Standard-approved techniques will be utilised when excavating within the root protection area.

3-5-53.6.6 The Open Cut installation works area is likely to be undertaken by several teams working within the school grounds simultaneously, in order to complete Open Cut within the term break.

3.6.7 Size of plant (vehicles and machinery) will be smaller than traditional Open Cut plant. This is necessary to work safely within the reduced 10m working width.

3.6.8 All fabrication works (such as grinding, welding, coating and testing) will be undertaken behind screens or within shelters in order to reduce any impact on the users of the park. These screens will include acoustic protection if required.

3-5-63.6.9 The playing field to the north of the main school building is located on a historical landfill site. Installation through this area will comply with commitment G71 to manage the construction work within potentially contaminated land.

### **3-63.7 Reinstatement**

3-6-13.7.1 The only area that will require topsoil to be removed is above the trench. Turf is likely to be removed, stored and reinstated to reduce the recovery period of the sports pitch surface, subject to the agreement of the school. Alternatively, new turf could be used for reinstatement.

3-6-23.7.2 Vegetation will be reinstated as shown in the reinstatement plan attached at in Appendix B. This reinstatement plan will be included within Appendix B of the





Landscape and Ecological Management Plan (LEMP) (~~Document Reference 8.50~~) for the approval of the relevant planning authority as per Requirement 8(1)(b) and Requirement 12 of the DCO (~~Document Reference 3.1 (5)~~).

3.7.3 The vegetation will be subject to a five-year aftercare period to ensure it becomes established.

### **3.7.3.8 School Specific Items**

3.7.13.8.1 All construction personnel working on school property will have been Criminal Records Bureau (CRB) and/or ~~Disclosure and Barring Service~~ Disclosure and Barring Service (DBS) checked.

3.7.23.8.2 The project has offered a representative to speak with any visitors to the school during the works.

3.7.33.8.3 The project has offered to explore further options to reduce visual impacts of views from the school, such as living screening or planting around the working area. Alternatively, a solid hoarding with photographic or art-worked wrap could be used to screen the Open Cut area. Esso is happy to agree the solid screening design with the school. However, additional screening will take time to install and may need to take place at the end of the preceding summer term to make sure that the Open Cut installation will be completed within the summer holiday period.



## **Appendix A – Area Plan**



## **Appendix B – Construction and Reinstatement Plans**